



P

ermanent

U

p

M

ake

SYSTEM



Fully disposable accessories provide hygienic environment and safe application.

Free speed adjustment provide output frequency according to user's preference.

CE approved.

# PERMANENT MAKEUP AESTHETIC

New Color Available!



BM-8

## Dragon Machine

Dragon Machine is specially designed for experienced professionals. Dragon machine provide ultimate strength, precision and stability you demand, with it outstanding performance dragon machine provide excellent and effortless application for eyebrow, eyeliner, Lip makeup and even small patterns of body tattoos. This ideal machine is perfect for professional use.

Permanent Makeup



Permanent Make Up SYSTEM



## BPN & BFN Needle Series

### Bella's Exclusive Integrated Needle

This exclusive integrated needle is safely designed and developed by Bella, with global patented design to achieve highest safety standard, stability, precision and sanitary requirement.

Our needles are manufactured with superior medical grade stainless steel, long taper and finest tip allows needle and pigment to penetrate into skin quickly and smoothly. Integrated needle is a combination of needle and needle tube, this design helps needle with extra support, prevent needle from bending throughout the procedure, this extraordinary support also helps to bring the full output of machine.

Superior quality and complies with international cosmetology and medical requirements.

Excellent stability, less vibration.

Needle made of medical grade stainless steel.

Exclusively and patented design for Bella machines.

Sterilization certified by Gamma Ray, complies with Government Sterilization Guidelines.

Individually packed.

Disposable, for single use only.

08

# Permanent Makeup Needle



**BPN-1 (2 in 1) Single Needle**  
Most suitable for eyebrow liner, eyeliner and lip liner application.

**BPN-2 (2 in 1) 2 Prong Needle**  
Most suitable for eyebrow Liner, eyeliner and lip liner application.

**BPN-3 (2 in 1) 3 Prong Needle**  
Most suitable for eyebrow Liner, eyeliner and lip liner application.

**BPN-5 (2 in 1) 5 Prong Needle**  
Most suitable for eyebrow and lip application.

**BPN-7 (2 in 1) 7 Prong Needle**  
Most suitable for eyebrow and lip application.

**BFN-3 (2 in 1) 3 Flat Needle**  
Most suitable for eyebrow and lip application.

**BFN-4 (2 in 1) 4 Flat Needle**  
Most suitable for eyebrow and lip application.

**BFN-6 (2 in 1) 6 Flat Needle**  
Most suitable for eyebrow and lip application.



10

# Permanent Makeup Accessories

**BBC-1** **Small Needle Cap**

Purpose: Exclusively designed for 2 & 3 prong needle use.



**BBC-2** **Large Needle Cap**

Purpose: Exclusively designed for 5 & 7 prong needle use.



**BBC-3** **Flat Needle Cap**

Purpose: Exclusively designed for all types of flat needle use.



**BBC-4** **Single Needle Cap**

Purpose: Exclusively designed for single needle use.



**BBS-1** **Disposable Sleeve**

Single use disposable sleeve is recommended to be disposed immediately after each use, which would help to reduce the risk of bacteria growth and cross infection and brings health and hygienic environment.



**BBT-2** **Transmission Shaft**

An exclusive patented design for Bella's machine, easy self replacement and recommended for replacement after certain period of usage.



**BBB-10** **Battery Casing**

The battery casing provides temporary power source when no electricity is available.



# Permanent Makeup ACCESSORIES

BBF-1

## Foot Pedal

Foot pedal allows you to turn on and off your machine without using the switch. The precision foot pedal is made of steel with a long lasting baked enamel finish.

The pedal can control the machine and reduce time while leaving both hands free for the procedure.



BBR-1

## Disposable Finger Ring

Bella's exclusive designed. This product to be used with BBR-2 disposable color container. It can be held in the finger ring to facilitate dipping during the operating process.



BBR-2

## Disposable Pigment Container

Bella's exclusive designed pigment containers with high dense sponge insert. Perfect holder for pigment and anesthetics during application and can be used with disposable finger ring or Acrylic stand.



BBS-7

## Square Acrylic Stand (8 Holders)

This stand is made with superior acrylic material, elegant design with eight pigment container holders and machine stand. This stand provides convenience through out the procedure.



BBS-8

## Round Acrylic Stand (5 Holders)

This stand is made with superior acrylic material, elegant design with five pigment container holders and machine stand. This stand provides convenience through out the procedure.





**BPC-101 ~BPC-104** **Vivid Pigment**

Vivid pigments are composed by 4 beautiful blazing colors, exclusive designed for lip permanent makeup procedure, the intensity color chart create mystic, fresh, and charming lip color, also meet all kinds of skin tone.



**BPC-101**  
Reddish orange

Presents Light orange ~ Light Brick Red on the lip after cicatrisation of permanent makeup procedure.

1. This sweet orange color tone setoff special characteristic of young and passion.
2. BPC-101 can be used as base lip color while doing procedure, it can polish up lip color and makes lips look more attractive.
3. BPC-101 can be used for doing lip line micro pigmentation; it creates a natural look on lip line.

**BPC-102**  
Dolce red

Presents Pink ~ Cameo Brown Red on the lip after cicatrisation of permanent makeup procedure.

1. This fresh coral color tone brings out the tincture of love.
2. Use BPC-101 as base color, and then use BPC-102 to polish lip color while doing micropigmentation, BPC-102 helps the lip color more intensity and flourishing.
3. Mix BPC-102 with BPC-307, the mixed color embellishes imperfect lip color and creates misty lip color.

**BPC-103**  
Rose Red

Presents Berry Red ~ Crimson Red on the lip after cicatrisation of permanent makeup procedure.

1. This Berry red color tone composes intellective and confident beauty.
2. Use BPC-101 as base color, and then use BPC-103 to polish lip color during procedure, BPC-103 helps the lip color more intensity and flourishing.
3. Outlines the lip line by BPC-103, then fills in the lip color by BPC-102, it shows a graceful and modeling lip color.
4. Mix BPC-103 with BPC-307, the mixed color embellishes imperfect lip color and creates a misty lip color.

**BPC-104**  
Red wine

Presents Burgundy ~ Maroon Red on the lip after cicatrisation of permanent makeup procedure.

1. This classical red wine color tone glorifies the beauty of coldness.
2. BPC-104 can be mixed with other red colors for more intensity and flourishing purpose.
3. Mix BPC-104 with BPC-307, the mixed color shows a romantic misty purple color on lip.

14

Permanent Makeup Pigment

**BPC-01 ~BPC-25** **Nano Pigment**

Nano pigment are the most comprehensive line of high-quality pigments, with 24 most popular colors it offer you greater success in matching over different skin tones. We develop Nano pigment to perform consistently and safely. All colors have been tested and may be used with any pigmentation device. Nano pigment is manufactured and formulated by certified laboratory under strict safety guidelines and using the highest purity FDA approved color ingredients



# BPC-301 ~BPC-308 Creamy Pigment

Newly formulated concentrate creamy pigments, this pigment was specially designed and formulated for both PMU manual tools and PMU machines, each shades was delicate for eyebrow and eyeliner, unique formulation provide excellent penetration and result.

**Unique Formulation for easier skin penetration**  
**Creamy Consistency**



Method to mix the colors:

- Main colors -
- BPC-305 Golden Brown
  - BPC-303 Brunet
  - BPC-302 Tan
  - BPC-301 Pure Black

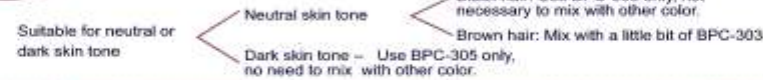
- A. Select only one suitable creamy pigment for using.
- B. Choose two creamy pigments which the color tones are similar and mix these two colors.
- C. Due to the high density of creamy pigment, users should add 1 - 2 drops (for one procedure) of solvent or purified water into the pigment before using.

**BPC-304**  
Brick Red

Applicatory pigment for outdated black eyebrows.

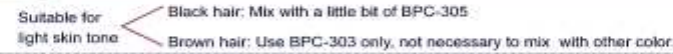
**BPC-305**  
Golden Brown

Presents natural brown color on eyebrows after cicatrisation of micropigmentation.



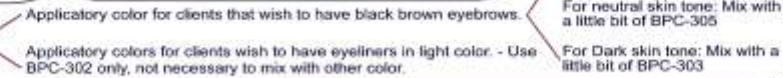
**BPC-303**  
Brunet

Presents natural nut brown color on eyebrows after cicatrisation of micropigmentation.



**BPC-302**  
Tan

Presents dark brown color on eyebrows after cicatrisation of micropigmentation.



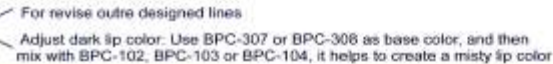
**BPC-301**  
Pure Black

Presents pure black color on eyebrows after cicatrisation of micropigmentation.

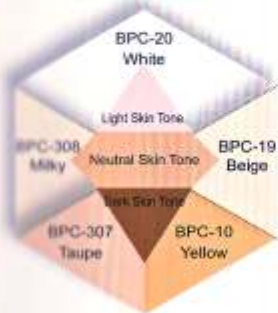


**BPC-307**  
Taupe

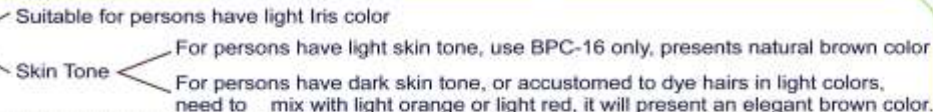
**BPC-308**  
Milky



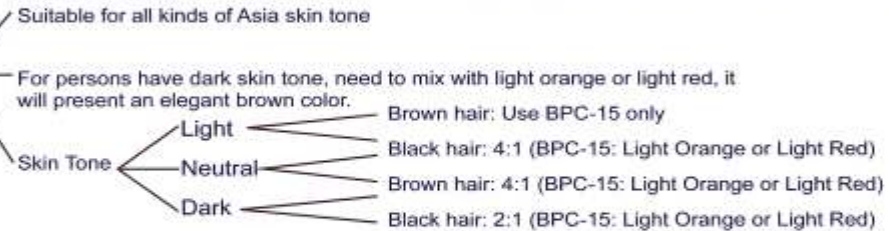
## Camouflage Skin Tone Chart



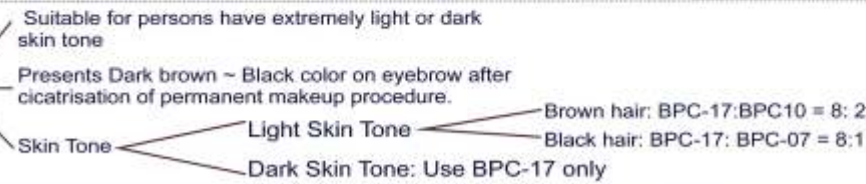
**BPC-16**  
Brown



**BPC-15**  
light Brown

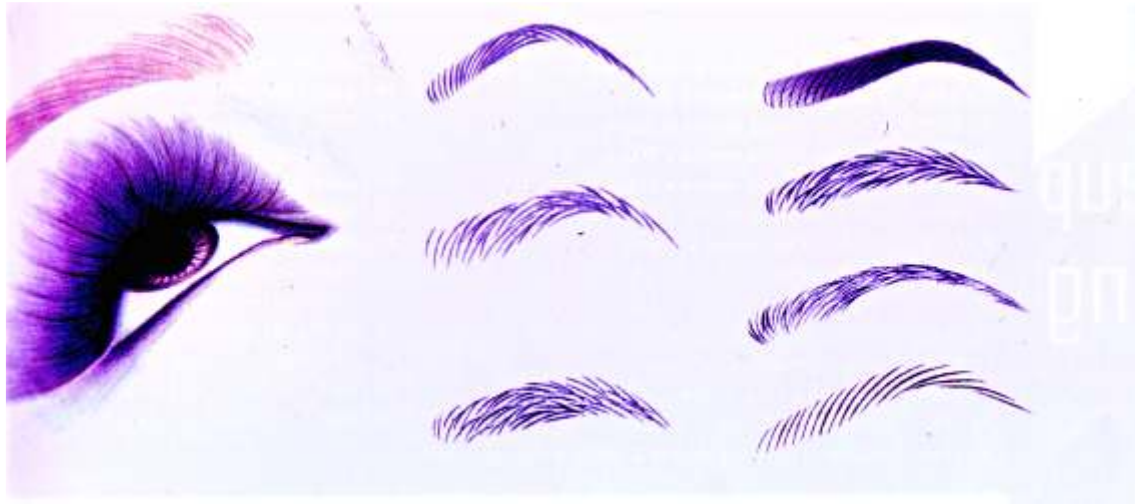


**BPC-17**  
Dark Brown



- BPC-01 Orange
- BPC-14 Dark gray
- BPC-02 Sunset
- BPC-15 Light brown
- BPC-03 Purple red
- BPC-16 Brown
- BPC-04 Rose red
- BPC-17 Dark brown
- BPC-05 Peach
- BPC-18 Green
- BPC-06 Burgundy
- BPC-19 Beige
- BPC-07 Red
- BPC-20 White
- BPC-08 Dark red
- BPC-21 Red brown
- BPC-09 Pink
- BPC-22 Coco
- BPC-10 Yellow
- BPC-23 Light orange
- BPC-11 Blue
- BPC-24 Yellow brown
- BPC-12 Black
- BPC-25 Solvent
- BPC-13 Jet black

# Permanent Makeup



## Pigment Reference Chart



Recommended Pigment Color for Eyeline

- BPC-11 Blue
- BPC-12 Black
- BPC-18 Green
- BPC-301 Black



Recommended Pigment Color for Lip

- BPC-101 Reddish orange
- BPC-102 Dolce red
- BPC-103 Rose wood
- BPC-104 Red wine
- BPC-01 Orange
- BPC-02 Sunset
- BPC-03 Purple red
- BPC-04 Rose red
- BPC-05 Peach
- BPC-07 Red
- BPC-08 Dark red
- BPC-09 Pink
- BPC-21 Red brown
- BPC-22 Coco
- BPC-23 Light orange
- BPC-06 Burgundy
- BPC-19 Beige
- BPC-20 White



Recommended Pigment Color for Eyebrow

- BPC-301 Pure Black
- BPC-302 Tan
- BPC-303 Brunet
- BPC-304 Brick Red
- BPC-305 Golden Brown
- BPC-307 Taupe
- BPC-308 Milky
- BPC-12 Black
- BPC-13 Jet Black
- BPC-14 Dark gray
- BPC-15 Light brown
- BPC-16 Brown
- BPC-17 Dark brown
- BPC-22 Coco
- BPC-24 Yellow brown
- BPC-05 Peach
- BPC-01 Orange
- BPC-10 Yellow
- BPC-23 Light orange